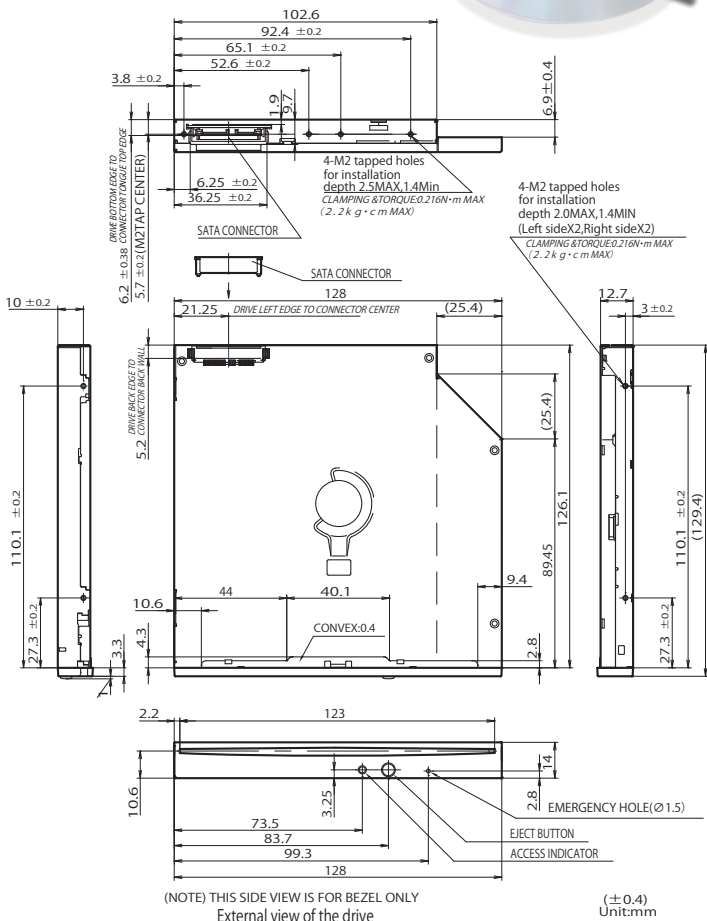




Slot Loading



# NEW Product Information

## DV-W28SS-B Slot-Loading DVD Super Multi Drive

**8x DVD±R**      **4x DVD±RW**  
**6x DVD±R DL**      **24x CD-R**

- Slim type Slot Loading design
- Zero Power ODD Support
- Supporting disc-at-once, session-at-once, packet write, incremental, over write, track-at-once recording mode, sequential write, multi-session and back ground format
- Horizontal and vertical mounting for most system configuration
- One Push Emergency Eject Function

Write Speed (Max Speed)	DVD+R	8x (CAV)
	DVD+R DL	6x (ZCLV)
	DVD-R	8x (CAV)
	DVD-R DL	6x (ZCLV)
	DVD+RW	4x (ZCLV)
	DVD-RW	4x (ZCLV)
	DVD-RAM	3x (ZCLV)
	CD-R	24x (CAV)
CD-RW	HS	10x (ZCLV)
	MS	4x (CLV)
Read Speed (Max Speed)	DVD-ROM	8x (CAV)
	DVD±R	8x (CAV)
	DVD+R DL (Finalized Disc)	8x (CAV)
	DVD-R DL (Finalized Disc)	8x (CAV)
	DVD±RW	8x (CAV)
	DVD-RAM (4.7G)	5x (ZCLV)
	CD-ROM	24x (CAV)
	CD-R / RW	24x (CAV)
Disc Diameter	12cm	
Interface	SerialATA Revision3.1	
Data Transfer Rate	Gen1 1.5GB / sec	
Access Time	150ms (typ) DVD-ROM	
	140ms (typ) CD-ROM	
Data Buffer	512KB	
Loading Mechanism	Slot Loading Type	
Environmental Conditions		
Ambient Temperatures	Operating	5 to 45°C
	Non Operating	-20 to 60°C
	Transportation	-40 to 65°C
Ambient Humidity	Operating	8 to 80% (non-condensing) *
	Non Operating	5 to 95% (non-condensing) *
	Transportation	5 to 95% (non-condensing) *
Power Requirements	DC5V±5%	
Current Consumption	Standby / Sleep 70mA / 70mA (Average current max)	
	During starting / Seek 1500mA (Max, Spikes less 1ms)	
MTBF	60,000POH (10% duty)	
Safety / EMI Standards	UL, CUL, TÜV, CB, CE and BSMI	
Dimensions	128.0W x 12.7H x 129.4D (mm)	
Mass (Weight)	160g or less (Bezel Less)	
RoHS	Complied	

Remark  
Please check the specification sheets for detailed conditions and other information.  
\* The maximum wet-bulb temp. is 29.4 degree C



is a trademark of DVD Format/Logo Licensing Corporation registered in the U.S., Japan and other countries.



and are trademarks of Koninklijke Philips Electronics N.V.

Other company names and product names in this document are the trademarks or registered trademarks of their respective owners. Features and specifications are subject to change without notice. Precaution: To ensure safe handling and operation, read the Instruction Manual before use.

### TEAC CORPORATION

TEAC CORPORATION ( <http://www.teac.co.jp> ) 1-47 Ochiai, Tama-shi, Tokyo 206-8530 Japan

TEAC AMERICA, INC. ( <http://teac-ipd.com/data-storage/> ) 1834 Gage Road Montebello, CA 90640, USA Phone:1-323-726-0303 Fax:1-323-727-7656

TEAC EUROPE GmbH. ( <http://www.teac.de> ) Bahnstrasse 12, 65205 Wiesbaden-Erbenheim, Germany Phone:49-611-71580 Fax:49-611-7158-392

TAIWAN TEAC CORPORATION ( <http://www.teac.com.tw> ) 3F No.45, Sec.1 Min Chuan E. Road, 104 Taipei, Taiwan R.O.C. Phone:886-2-2597-8608 Fax:886-2-2597-8591

© Copyright TEAC CORPORATION 2014